




EMILY'S EDITION AND ANNOUNCEMENTS

This weekend in worship Pastor Doug and I will each be looking at the book of Job. To prepare for that, I invite you to open to Job in your Bible. You don't even have to do any reading (though you should!) to see a difference occurs between chapters 2 and 3. If you keep flipping through the book, you'll notice that the vast majority is written in poetry, bookended by two portions of prose.

The prose portions of the book tell the story of what actually happens to Job. The ~40 chapters of intervening poetry includes long speeches by Job's friends and by Job trying to make sense of what has happened to Job. These speeches build up to God's long-awaited response (It may not surprise you that God is the winner of this great theological debate.).

Like many of our biblical texts, Job is a composite work, which means that original sources were later combined to create the book we have today. In some books it's more challenging to spot the "seams" of sources, but Job offers us an obvious sign in the transitions between prose/poetry. It's not as cut and dried as the prose is one source and the poetry a second source, of course (there are probably multiple sources included in the poetry). I won't lead you too far into the weeds here, but I thought it was worth pointing out, because the sudden switch of styles/genres can be a signal that sources have been combined. Noticing such things is a good Bible-reading-skill to keep in your toolbox!

This weekend is also World Communion Sunday. We will share in the Lord's Supper together as we are mindful of brothers and sisters around the globe celebrating the Sacrament with us.



Sign Up Spot

Worship Acolytes



Worship Liturgist



The flowers on the altar are given by the Altar Guild to the Glory of God.

Missed last Sunday's message?



Thank you to everyone who has agreed to serve as ushers. The Confirmands & Youth are scheduled for October.

Prayer List

Adam and Bekah Harringer (Adam had a bicycle accident over Labor Day and is struggling with seizures as well as recovering from surgery, nephew of Dan and Cindy Carwile)

Dwight Markwell

Loved ones who are dealing with a cancer diagnosis (friends of Elliot Spruell, Anna Walls, and Lee Ann Shafer)

Middle East

Students and Teachers

Victims of gun violence

All those battling addiction and facing the daily struggle to stay clean.

Our military



Opens Tomorrow!

Bethlehem's Pumpkin Patch will be open for business tomorrow! Through the week, money can be placed in the "Honesty Box" inside the tent (\$10.00 for large pumpkins, \$5.00 for small). On Fridays from 3-7, Saturdays from 9-7, and Sundays from noon-6, volunteers will be on duty. All profits from pumpkin sales are used to fund our annual Bucket Blitz and other Church World Service projects.



Commitment
Cards



Missed Commitment Weekend? There is still time to bring or mail your pledge

card to the church! Commitment cards allow our finance ministry team to carefully plan how we, as the church, can be the best stewards of our gifts and resources. 2025 individual pledge cards can be found in the Welcoming Area, narthex, outside the church office, and in the office entrance vestibule (open 24/7), and are always kept confidential. Should you need one mailed, please contact the church office at church@bethlehemucc.org or 812-867-2497.

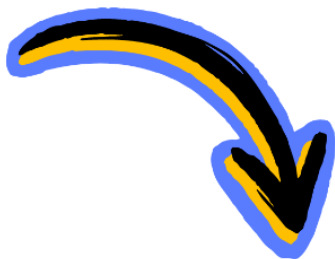


Our annual Bucket Blitz will be this weekend. During the Sunday School hour, our children and youth will gather in the Fellowship Hall to fill 40 five-gallon buckets with supplies needed for clean-up after natural disasters. Bethlehem also serves as a Bucket Depot, where other churches can drop off buckets and other items such as hygiene and school supplies kits, which will then be taken to Indianapolis and distributed by Church World Service to areas in need. This has been a Bethlehem project for many years but is especially timely this year after the devastation of Hurricane Helene. To learn more about CWS, click [here](#).



NEIGHBORS IN NEED OFFERING BEGINS

Bethlehem will be collecting the Neighbors in Need offering throughout the month of October. This is one of the United Church of Christ's annual special offerings and supports ministries of justice and compassion throughout the United States. This year's theme is "**Mental Health Justice for All: Mental Health is a Universal Human Right**". Gifts can be made online at bethlehemucc.org or in special envelopes found in the pews and at church entrances. Look for more info in upcoming Emily's Editions.



Fellowship Night

CONFIRMAND/MENTOR

This Sunday 5:00 - 7:00 pm

Mentors, Junior Mentors, and Confirmands are invited and encouraged to join us for dinner and an activity. We will meet in the Fellowship Hall. Ms. Margaret promises a fun, festive night that will help us get to know each other and have fun! (Please RSVP to MARGARET via email or text margaret@bethlehemucc.org or 859-576-1442)



ST PAUL'S

UNITED CHURCH OF CHRIST

Invites you to the Installation Service
of Rev. J.D. Rose as our Settled Pastor

October 6, 2024 at 3:00 PM

In the Sanctuary

at St. Paul's United Church of Christ

7700 Middle Mount Vernon Rd., Evansville, IN



A meal will immediately follow,
downstairs in our Fellowship Hall

A shuttle to the lower level will be provided for anyone for whom stairs are a challenge

UPCOMING NEW MEMBER SERVICE

Are you interested in officially becoming a member of Bethlehem? We'd love to have you! Please reach out to Pastor Emily to learn more at emily@bethlehemucc.org. We'll be receiving new members in worship on November 3 (but can do so any time, if that date doesn't work for you!).

SIGN UP FOR ALTAR FLOWERS

Please use the button below to see the **list of available dates and to order altar flowers**. If you'd prefer a paper form for your flower donation, they are currently available outside the church office. Please contact Cindy Carwile with any questions (812-430-6953 or ckcarwile@gmail.com).

Altar Flower Sign Up

Online Giving

Whether giving to the church's general fund or a special offering, doing so online (24/7) is a quick and easy alternative to check-writing or having cash on hand. Simply click the button below.

Give Here

R.O.M.E.O. CLUB

What is the Bethlehem R.O.M.E.O. Club? It is Retired Old Men Eating Out (just men gathering) every Tuesday for food, fellowship, and faith. ROMEO Club is open to anyone no matter your age! The Club will meet again this Tuesday at 11:30 am at Pips Pub. If you would like to join the group for lunch, please RSVP to Barry Jones at Twinpapa02@yahoo.com by Monday morning. New faces are always welcome!



Coming Up

Thursday, October 3, today

8am – 3pm

Fellowship Hall & Kitchen Rsvd. - Traylor

6:30 – 7:30pm

Bell Choir Rehearsal

Music Room

7:30 – 8:30pm

Chancel Choir Rehearsal

Music Room

Friday, October 4

8am – 5pm

Fellowship Hall & Kitchen Rsvd. - Traylor

3 – 7pm

Pumpkin Patch Officially Opens

Saturday, October 5

5:30 – 6:30pm

Worship - Communion & Moment for Mission NIN

Welcoming Area

Sunday, October 6

9 – 10am

Bucket Blitz

Fellowship Hall

10:15 – 11:15am

Worship - World Wide Communion & Moment for Mission NIN

Sanctuary

11:30am – 1pm

WEB Luncheon
Fellowship Hall

5 – 7pm
Confirmation Fellowship Dinner
Fellowship Hall

Monday, October 7

8:30 – 10am
Confirmation Classroom Rsvd. - Worthington

Tuesday, October 8

All day
STAR Deadline

10:30 – 11:45am
Bible Study Group
Confirmation Classroom

Wednesday, October 9

6 – 7:30pm
Cub Scout Den 346 Meeting
Fellowship Hall, Welcoming Area & Education Wing

Thursday, October 10

6:30 – 7:30pm
Bell Choir Rehearsal
Music Room

7:30 – 8:30pm
Chancel Choir Rehearsal
Music Room

Friday, October 11

5:30 – 6:30pm
McCain-Holt Wedding Rehearsal
BUCC Sanctuary

Saturday, October 12

3:30 – 4:30pm

McCain-Holt Wedding
Sanctuary

5:30 – 6:30pm
Worship
Welcoming Area

Sunday, October 13

10:15 – 11:15am
Worship
Sanctuary

6 – 8pm
Eosin Potluck Dinner
Fellowship Hall & Kitchen



Bethlehem United Church of Christ

6400 Oak Hill Road

Evansville, IN 47725

812.867.2497

bethlehemucc.org