

# EMILY'S EDITION AND ANNOUNCEMENTS

This weekend on Saturday night, Pastor Doug will be preaching on Mark 10.35-45. Brothers James and John come to Jesus with an audacious request, irritating the other ten disciples. Jesus offers all of them a bit of teaching on humility, using himself as the example. On Sunday morning, I'll be preaching on 2 Samuel 12.1-13, a sermon titled, "The Voice of Nathan: Resisting the Political Machine." We will explore two strategies the Political Machine uses to silence the church (/Church) and use Nathan as our example as we talk about our responsibility to hold officials accountable. I hope you'll make time to join us for worship this weekend or worship with us online!

**Sign Up Spot**

**Worship Acolytes**



**Worship Liturgist**



**ALTAR FLOWERS**

The arrangement on the altar is provided by the Altar Guild in celebration of the fall harvest.

# Missed last Sunday's message?



Thank you to everyone who has agreed to serve as ushers. The Confirmands & Youth are scheduled for October.



Zion Evangelical UCC as they prepare for their final worship services (final service is October 27)  
Family and Friends of Kayla Flaherty (died October 3, sister of Kelley Felt)  
Adam and Bekah Harringer (Adam had a bicycle accident over Labor Day and is now doing better, but waiting on further test results, nephew of Dan and Cindy Carwile)  
Dwight Markwell  
Middle East  
Students and Teachers  
Victims of gun violence  
All those battling addiction and facing the daily struggle to stay clean.  
Our military



**This Sunday!**

Please join us October 20 to celebrate Sheri Schenk's 25-year anniversary at Bethlehem. A reception will be held after the 10:15 am worship service and everyone is invited. Sheri serves as Bethlehem's Director of Music and Organist.

## Chance to win a \$200 Amazon gift card!



Bethlehem has been asked to participate in a survey to help better understand the ways congregations were impacted by the pandemic. Please consider using the link below to take the survey (it should take 10-15 minutes) or reach out to Pastor Emily if you'd like a paper copy. Once you've completed the survey, let Pastor Emily know and your name will be entered into a drawing to win the \$200 Amazon Gift Card our Congregation will receive for participating in the survey.

This Attender Survey is a part of the Exploring the Pandemic Impact on Congregations (EPIC) project and Faith Communities Today (FACT) research initiative in which the United Church of Christ participates. EPIC is a 5-year research project studying changes in the religious landscape since the COVID-19 pandemic.

You can learn more about the project by watching this two minute video: [2024 Attender Survey: Intro Video \(youtube.com\)](#)

Link to the survey:

[https://covidreligionstudy.qualtrics.com/jfe/form/SV\\_9GYI89a3NMOwuFw?congregation=12834](https://covidreligionstudy.qualtrics.com/jfe/form/SV_9GYI89a3NMOwuFw?congregation=12834)



We're now halfway through October, and the Pumpkin Patch is in full swing! Thanks to all who have helped in so many ways - setup, decorating, selling pumpkins, and more. Supplies of the large \$10 pumpkins are limited, but there are still plenty of the small \$5 ones. All profits from pumpkin sales are used to fund the annual Bucket Blitz and other Church World Service projects.

**\*\*\* Special event this Saturday! \*\*\***



The WEB women's group will be hosting a Bake Sale in the Pumpkin Patch from 9:00-1:00. Stop by and get some fall treats, and maybe buy a pumpkin! Proceeds from the Bake Sale will help fund service projects. Unsold bake sale items will be for sale on Sunday morning. Thank you, WEB, for adding to the fun!

## Upcoming Sunday Morning Sermons

**October 20\*:** The Voice of Nathan: Resisting the Political Machine

**October 27:** A Halloween Bible Story: a Costume, a Witch, and a Message from the Beyond

**November 3:** Totenfest Sunday

**November 10\*:** The Election is Over. We are Still Neighbors.

**November 17:** Getting a Jumpstart on Advent

\*These messages will also be preached on Saturday nights, October 26 and November 16, respectively.

## Attn: Committee Heads

Please remember to submit your Committee Leadership information to the office by **October 31st**.

Click on the link below. It will only take a matter of minutes to provide the requested information. Many thanks for your cooperation. Please contact Patty Oglesby with any questions at [patty@bethlehemucc.org](mailto:patty@bethlehemucc.org).

<https://bethlehemucc.breezechms.com/form/45a07d074>

---



## **NEIGHBORS IN NEED OFFERING CONTINUES**

Collection of the Neighbors in Need offering continues this weekend and next. This annual offering supports ministries of justice and compassion throughout the United States. This year's theme is "Mental Health Justice for All: Mental Health is a Universal Human Right".

Special giving envelopes are available in the pews and on tables in the vestibule by the church office and the Welcoming Area. Gifts can also be made online at [bethlehemucc.org](http://bethlehemucc.org). With your assistance, together we can help our Neighbors in Need.

---



# Final Fall Church Workday

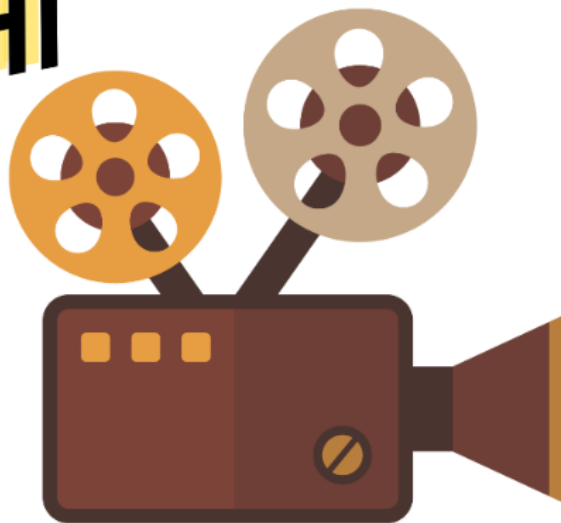
**Mark your calendar!**

**On Saturday, October 26**, we will be doing a final all-church cleanup of our campus before winter arrives. We'll start the morning with coffee and donuts at 7:30 am and finish up about noon. New faces and younger backs are always welcomed!

---

---

FALL  
**MOVIE NIGHT**



**OUTDOOR MOVIE/FALL CELEBRATION NIGHT**  
**SATURDAY, OCTOBER 26, 5:00 PM**

Join us at the Burgoo Building/new pavilion for pumpkin painting, hotdogs,

smores, and an outdoor movie. All ages are welcome for this event. We will have an early, not so scary movie, for the littles followed by a more festive movie for older youth and adults. (Please RSVP to MARGARET via email or text [margaret@bethlehemucc.org](mailto:margaret@bethlehemucc.org) or 859-576-1442)

---



### **YOUTH OUTING, SUNDAY, OCTOBER 27, AFTER CHURCH**

The youth (6th-12th graders) will go to Holiday World after worship on Sunday, October 27th. This seemed like the perfect outing to wrap up their October Sunday School curriculum (a rollercoaster themed series on learning to trust God). We would like to extend the opportunity to buy tickets at our group rate (\$30) to anyone in the congregation. This will be the last day Holiday World is open for the season. The park hours that day are 11:00 am - 5:00 pm. We are scheduled to worship outdoors on the 27th, a perfect setup to dress comfy and then head to the park! If you are interested in purchasing tickets, please contact Margaret Eberhart via text or email. 859-576-1442  
[margaret@bethlehemucc.org](mailto:margaret@bethlehemucc.org).

## **UPCOMING NEW MEMBER SERVICE**

Are you interested in officially becoming a member of Bethlehem? We'd love to have you! Please reach out to Pastor Emily to learn more at [emily@bethlehemucc.org](mailto:emily@bethlehemucc.org). We'll be receiving new members in worship on November 3 (but can do so any time, if that date doesn't work for you!).

---



# Commitment Cards



**Help the Finance Ministry Team Today!**

Thank you to everyone what has turned in a pledge card. If you missed Commitment Weekend, there's still time to make a pledge! 2025 pledge cards are located in the Welcoming Area, narthex, outside the church office, and in the office entrance vestibule (open 24/7). Completed pledges may be placed in a weekend offering plate, inside the secured mailbox in the office vestibule, left with the church office, or mailed to the church at 6400 Oak Hill Rd., Evansville, IN 47725. Pledge cards are kept confidential. If you need any help with the cards, please contact the church office at [church@bethlehemucc.org](mailto:church@bethlehemucc.org) or 812-867-2497.

## SIGN UP FOR ALTAR FLOWERS

Please use the button below to see the **list of available dates and to order altar flowers**. If you'd prefer a paper form for your flower donation, they are currently available outside the church office. Please contact Cindy Carwile with any questions (812-430-6953 or [ckcarwile@gmail.com](mailto:ckcarwile@gmail.com)).

[Altar Flower Sign Up](#)

## New Windows



The hallway outside the sanctuary will be receiving an upgrade this coming week. The existing windows will be replaced with stained glass windows. These gifts come at the direction of Diane Gaffney, Judy Koch, and Lois Schultheis from memorial gifts given in memory of their late husbands, Mel Gaffney, Gene Koch, and Bud Schultheis.



# Online Giving

Whether giving to the church's general fund or a special offering, doing so online (24/7) is a quick and easy alternative to check-writing or having cash on hand. Simply click the button below.

[Give Here](#)



## Apple Pies



It's Harvest time – time for picking and enjoying apples! The Eosin Sunday School Class will be selling our famous Dutch Apple Crumb Pies to benefit missions. We will be taking PREPAID orders once again this year. To be assured of getting pies, please complete the form at the bottom of this page and put it in the Eosin mailbox (level 2 by the elevator) or leave it in the church office. Please make your checks out to Eosin. **Additional order forms are available in the church office vestibule, Welcoming Area, and narthex.**

\*This year there is a special incentive to order early. We will be giving away a coupon from Logan's Roadhouse for a dozen of their delicious rolls with each pie order.

**The pies will be made and distributed on Thursday, November 14.** Please plan to pick up your pies between 2:00 and 5:30 PM that evening.

### EOSIN APPLE PIE SALE

Number of Pies \_\_\_\_\_ @ \$12.00 each total cost \_\_\_\_\_

Name \_\_\_\_\_ phone number \_\_\_\_\_

Email address  
\_\_\_\_\_

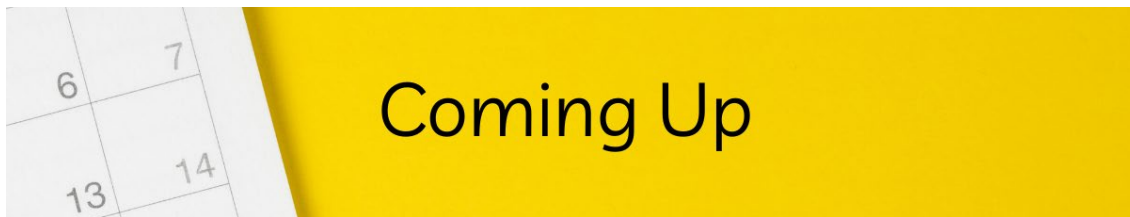
Remember to pick up your fresh pies on Thursday, November 14, between 2:00 and 5:30 PM.

Checks should be made out to Eosin.



# R.O.M.E.O. CLUB

What is the Bethlehem R.O.M.E.O. Club? It is Retired Old Men Eating Out (just men gathering) every Tuesday for food, fellowship, and faith. ROMEIO Club is open to anyone no matter your age! The Club will meet again this Tuesday at 11:30 am at Chopstick House. If you would like to join the group for lunch, please RSVP to Barry Jones at [Twinpapa02@yahoo.com](mailto:Twinpapa02@yahoo.com) by Monday morning. New faces are always welcome!



## Coming Up

### **Thursday, October 17, today**

6:30 – 7:30pm

Bell Choir Rehearsal

Music Room

7:30 – 8:30pm

Chancel Choir Rehearsal

Music Room

### **Saturday, October 19**

9am – 3pm

WEB Bake Sale @ Pumpkin Patch

5:30 – 6:30pm

Worship

Welcoming Area

### **Sunday, October 20**

10:15 – 11:15am

Worship - Commissioning the Back Bay Mission Volunteers  
Sanctuary

11:30am – 12:30pm  
Welcoming Area Rsvd. - Sheri Schenk 25th Anniversary

**Monday, October 21**

8:30 – 10am  
Confirmation Classroom Rsvd. - Worthington

5 – 6pm  
Executive Committee Mtg.  
Library

5:30 – 6:30pm  
Endowment Committee Mtg.  
Confirmation Classroom

6 – 8pm  
Church Council  
BUCC Fellowship Hall

6:45 – 7:45pm  
Spiritual Council Mtg.

**Tuesday, October 22**

10:30 – 11:45am  
Bible Study Group  
Confirmation Classroom

**Wednesday, October 23**

5:30 – 6:30pm  
Budget Cmte. Meeting  
Confirmation Classroom

6 – 7:30pm  
Cub Scout Den 346 Meeting  
Fellowship Hall, Welcoming Area & Education Wing

**Thursday, October 24**

6:30 – 7:30pm  
Bell Choir Rehearsal

Music Room

7:30 – 8:30pm

Chancel Choir Rehearsal

Music Room

**Friday, October 25**

4 – 5pm

Welcoming Area & Fellowship Hall Rsvd. Kuebler

Fellowship Hall & Welcoming Area

**Saturday, October 26**

8am – 12pm

All Church Workday

9am – 4pm

Busy Mrs. Auction & Lunch

Fellowship Hall & Welcoming Area

5 – 6pm

Outdoor Movie/Fall Celebration

5:30 – 6:30pm

Worship

Welcoming Area

**Sunday, October 27**

10:15 – 11:15am

Worship in Parking Lot

Sanctuary

11:15am – 2:15pm

Surprise Youth Outing

11:30am – 12pm

Council Chat

Welcoming Area

3:30 – 5:30pm

UCS DINNER - Couples Small Group

# United Caring Services



## **Bethlehem United Church of Christ**

6400 Oak Hill Road

Evansville, IN 47725

812.867.2497

[bethlehemucc.org](http://bethlehemucc.org)